

Long-Term Increases in Zooplankton Taxa Off Southern California



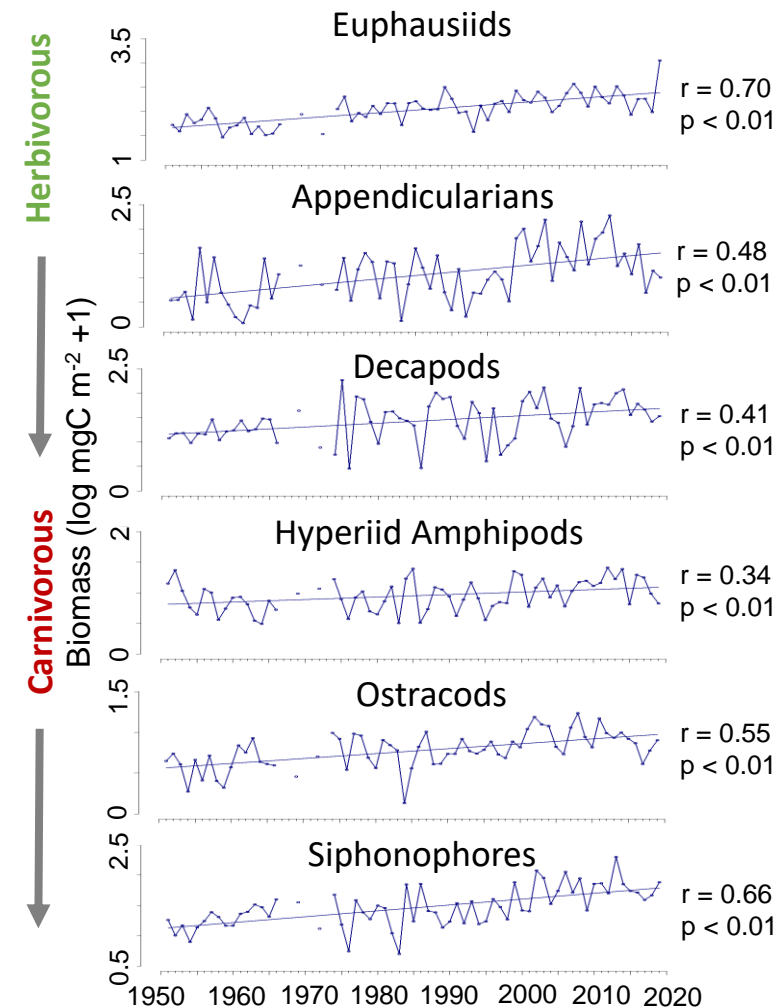
Laura E. Lilly¹, Linsey M. Sala², and Mark D. Ohman^{1,2}

¹CCE-LTER, Scripps Inst. of Oceanography, UC San Diego

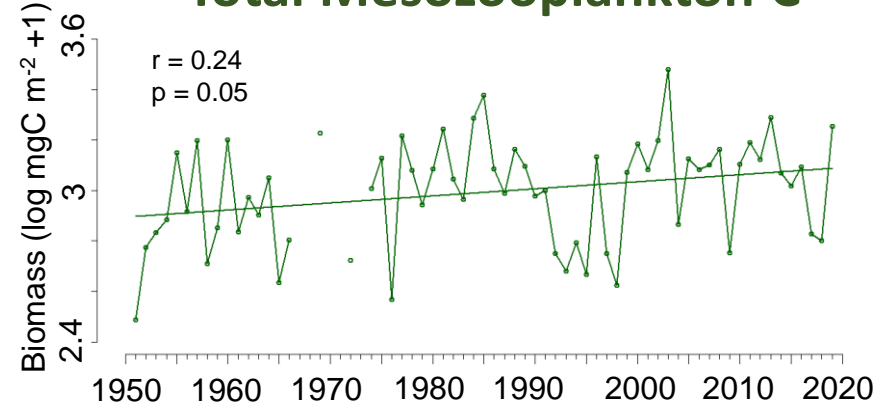
²Pelagic Invertebrate Collection, Scripps Inst. of Oceanography, UC San Diego



Increasing Taxa



Total Meso zooplankton C



CalCOFI zooplankton C biomass,
So CA (Spring, 1951-2019):

- **Total mesozooplankton biomass increases**
- **Six taxa increase**
- **Eight taxa have no trend** (inc: hydromedusae, polychaetes, ctenophores)
- **One taxon (salps) decreases**
- This analysis ignores **intra-taxon, El Niño, and decadal variability**

Methods: Enumerations of Spring CalCOFI samples by microscopy; body size to C from Lavaniegos & Ohman (2007)

Decreasing/No Change

